

National Indian Health Board



Programs and Resources from the National Environmental Health Association (NEHA)

HOST

NATIONAL INDIAN HEALTH BOARD (NIHB)

BREANNON BABEL, PHD, MPP, MPH

SENIOR PUBLIC HEALTH PROGRAM MANAGER

National Indian Health Board



Mission Statement

Established by the Tribes to advocate as the united voice of federally recognized American Indian and Alaska Native Tribes, NIOB seeks to reinforce Tribal sovereignty, strengthen Tribal health systems, secure resources, and build capacity to achieve the highest level of health and well-being for our People.



- Recorded and posted online
- Please keep phone lines muted
- Questions
 - End of all presentations
 - Use the chat box (not Q&A box)
- Survey

Climate Ready Tribes Initiative

- Provide funding and support for Tribes to conduct local climate and health work



Awardees Include

First cohort

Blackfeet Nation
Swinomish Indian Tribal Community
Village of Wainwright


New cohort

Kaw Nation (mini-award)
Lummi Nation
Pala Band of Mission Indians
Sitka Tribe of Alaska

Climate Ready Tribes Initiative

- Share information and resources nationally

National Indian
Health Board



Climate Change & Tribes: Exploring Current Impacts and Future Predictions for America's First People

January 14, 2019

Imagine a world where one Arctic summer per decade is too warm to support the sea ice that helps maintain our global ecosystem and environment, directly impacting the people and animals of these far north communities. A world where coral reefs, once bustling with the rich diversity of sea life, have all but completely disappeared from the oceans. A world where mass global migration from tropical areas leads to a drastic

NIHB Resources

Sign Up for Email Updates

For Email Marketing you can trust.

Articles

- [Climate Change & Tribes: Exploring Current Impacts and Future Predictions for America's First People, 1/14/19](#)

Tribal Climate Champions Spotlights

- [Spotlight on Gila River Indian Community, 1/9/19](#)
- [Spotlight on Blackfeet Nation, 5/29/18](#)
- [Spotlight on Village of Wainwright, 1/10/18](#)
- [Spotlight on Swinomish Indian Tribal Community, 12/1/17](#)

Webinars

- **6/12/18**
Including *Indigenous Health in Climate Change Assessments: Overview of Methods and Results from Swinomish*
[Read Description](#) | [Watch Recording](#) | [View Slides](#)
- **1/25/18**
Climate Change and Health in the Arctic: Impacts on Alaska Native Communities and a Spotlight on Efforts to Improve Climate Health
[Read Description](#) | [Watch Recording](#) | [View Slides](#)
- **7/17/17**
Climate and Health in Indian Country
[View Slides](#)
- **4/20/17**
CDC Climate and Health 101
[View Slides](#)

Climate and Health in Indian Country Fact Sheet

[View Fact Sheet Here](#)

Climate Ready Tribes Initiative

- Share information and resources nationally

[Climate & Health Learning Community](#)

- Over 800 members
- Opportunities to share and learn
 - Webinars (like this one!)
 - In-person event at Tribal Public Health Summit
- Professional development certificate

National Indian Health Board



National Environmental Health Association (NEHA)



Programs and Resources with NEHA

National Indian Health Board Webinar

June 19, 2019



UNCOVER EH

Natasha DeJarnett, PhD, Research Coordinator

ndejarnett@neha.org | (303) 756-9090 ext. 364

About NEHA



OUR MISSION

To advance the environmental health professional for the purpose of providing a healthful environment for all.

ABOUT NEHA

NEHA empowers and educates environmental health professionals, providing them the tools and resources they need to make the greatest contributions possible in creating healthy environments that we all seek.

OUR MEMBERS

The success of NEHA depends on the success of our **6,000 members**, who serve as the “boots on the ground” in their communities, possessing the knowledge and experience to address and respond to issues.

OUR COMMITMENT

NEHA provides the highest quality trainings, courses, tools, and resources to empower professionals to become trusted leaders and experts in their profession.



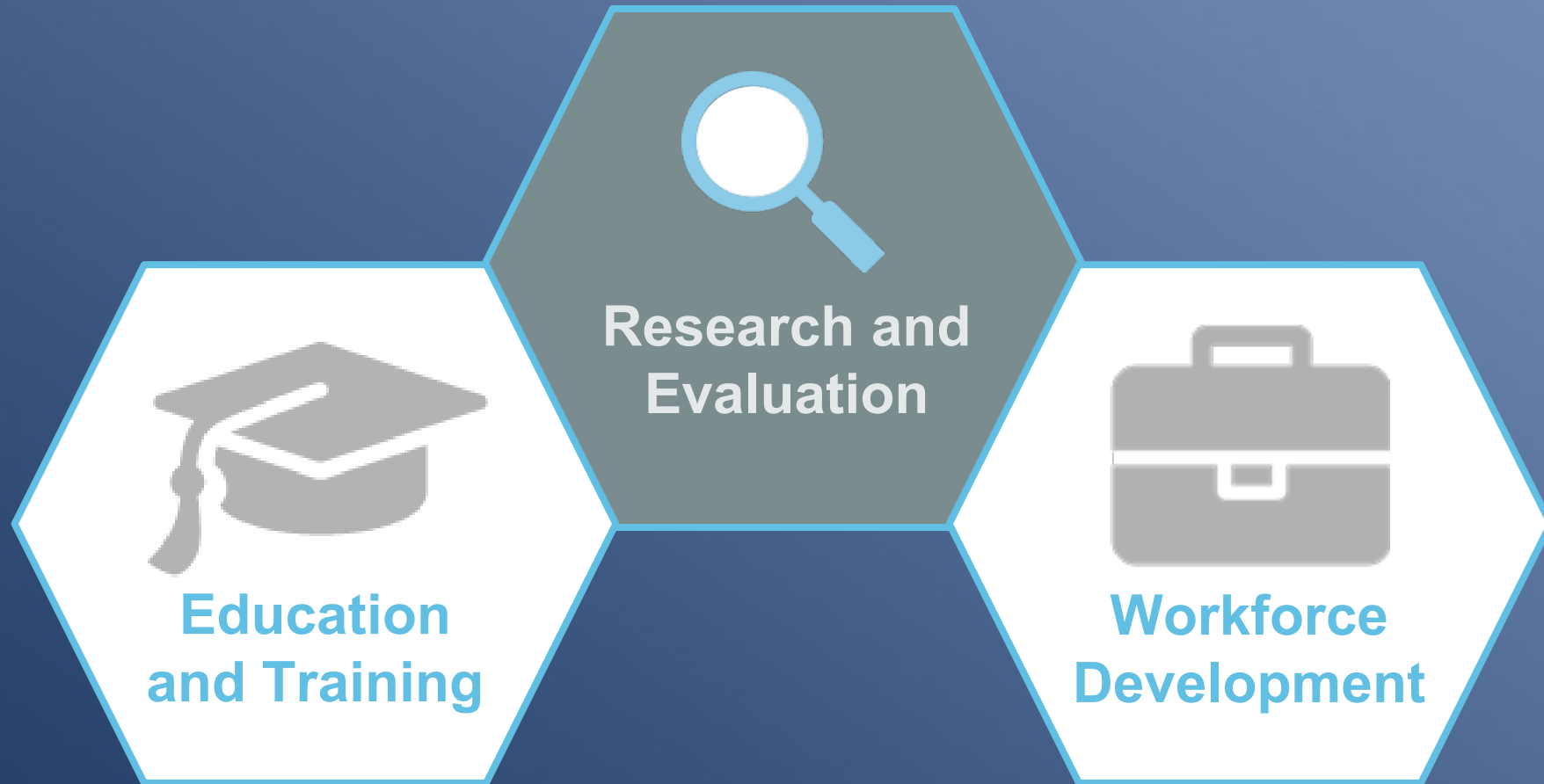
**83rd ANNUAL EDUCATIONAL
CONFERENCE & EXHIBITION**

Nashville, Tennessee • July 9 - July 12

NEHA's Unique Value

-  The only national organization devoted to the environmental health profession and professional
-  *Journal of Environmental Health* reaches over 20,000 readers and connects research to practice
-  Dynamic and growing membership
-  The voice of environmental health on Capitol Hill

Researching the Workforce



Researching the Workforce

UNCOVER Environmental Health

Understanding the
Needs, Challenges,
Opportunities, Vision
and Emerging Roles
in Environmental
Health (UNCOVER EH)

ADVANCEMENT OF THE PRACTICE

DIRECT FROM CDC ENVIRONMENTAL HEALTH SERVICES BRANCH



Justin A. Gerding,
MPH, REHS
Centers for
Disease Control
and Prevention



Elizabeth
Landeen
National
Environmental
Health
Association



Bryan W. Brooks,
PhD
Baylor University

Understanding the Needs, Challenges, Opportunities, Vision, and Emerging Roles in Environmental Health

Editor's Note: NEHA strives to provide up-to-date and relevant information on environmental health and to build partnerships in the profession. In pursuit of these goals, we feature a column from the Environmental Health Services Branch (EHSB) of the Centers for Disease Control and Prevention (CDC) in every issue of the *Journal*.

In these columns, EHSB and guest authors share insights and information about environmental health programs, trends, issues, and resources. The conclusions in this column are those of the author(s) and do not necessarily represent the views of CDC.

LCDR Justin Gerding is an environmental health specialist with CDC's EHSB. Elizabeth Landeen is the associate director of Program and Partnership Development with the National Environmental Health Association. Bryan Brooks is a distinguished professor of environmental science and biomedical studies and director of environmental health science at Baylor University.

Zika virus, Legionnaires' disease, and the Flint, Michigan, water crisis are examples of diseases and events requiring a response from a prepared, sufficient, and equipped environmental health workforce. While demands continue to increase, diverse factors such as health department budget cuts and decreased capacity can negatively impact environmental health professionals and programs (Association of State and Territorial Health Officials, 2014; National Association of County and City Health Officials, 2013). These compounding factors reinforce the need to understand the environmental health workforce

to identify gaps in staffing, training, and ultimately, to ensure preparedness to meet future challenges. The Centers for Disease Control and Prevention's (CDC) *National Strategy to Revitalize Environmental Public Health Services*, developed with input from numerous environmental health stakeholders representing governmental, nongovernmental, and academic organizations, identified the significance of conducting in-depth evaluations to ensure the existence of a sufficient and well-trained environmental health workforce with the capacity to provide quality services addressing community need (CDC, 2003).

Previous studies describing state, tribal, local, and territorial health departments have addressed aspects of environmental health staffing and services, yet there remains a critical need to engage environmental health professionals with a method designed specifically for the environmental health profession. In response, CDC, the National Environmental Health Association, and Baylor University are partnering on an innovative initiative to characterize the environmental health profession and understand the challenges environmental health professionals encounter. This effort, *Understanding the Needs, Challenges, Opportunities, Vision, and Emerging Roles in Environmental Health (UNCOVER EH)*, presents an unprecedented opportunity to delve into the profession and understand environmental health professional demographics, education and training, experience, areas of practice, and the current and future needs of environmental health professionals.

Though the work of environmental health professionals and the services they deliver are critical to protect local communities, the profession often remains unknown to many until an event occurs and appears on the front page of the newspaper or the nightly news. An initiative like UNCOVER EH has the potential to increase awareness of the profession by obtaining information directly from environmental health professionals about their practice and the challenges they currently face and envision for the future. UNCOVER EH con-



UNCOVER Findings

Who is the Environmental Health Workforce?

While balanced between men and women, the EH workforce has opportunities to become more racially and ethnically diverse.

About half of the EH workforce is women.

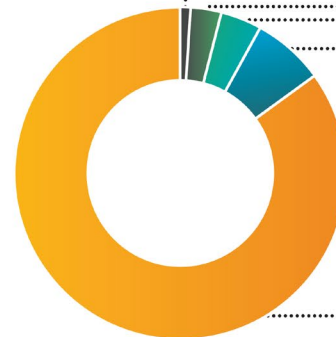
49%



51%



More than 8 in 10 EH professionals are white.
6% of the EH workforce is Hispanic.



Native Hawaiian or
Other Pacific Islander 1%

American Indian 3%

Asian 4%

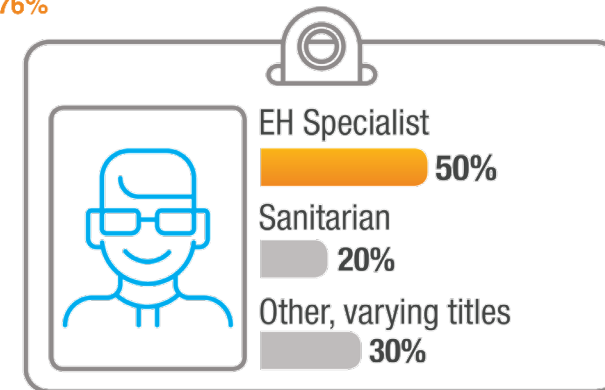
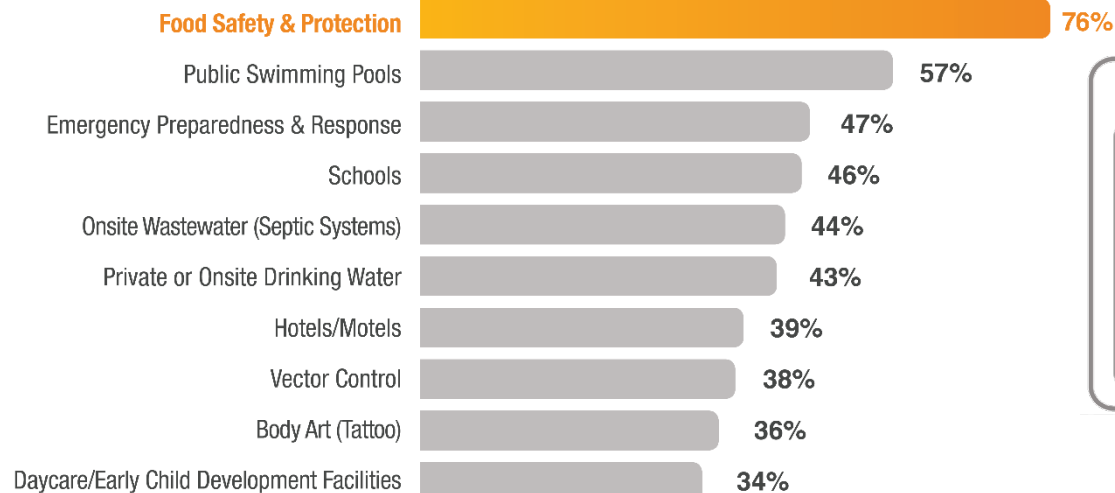
Black or African American 7%

White 85%

UNCOVER Findings

Environmental Health Workforce Specialties

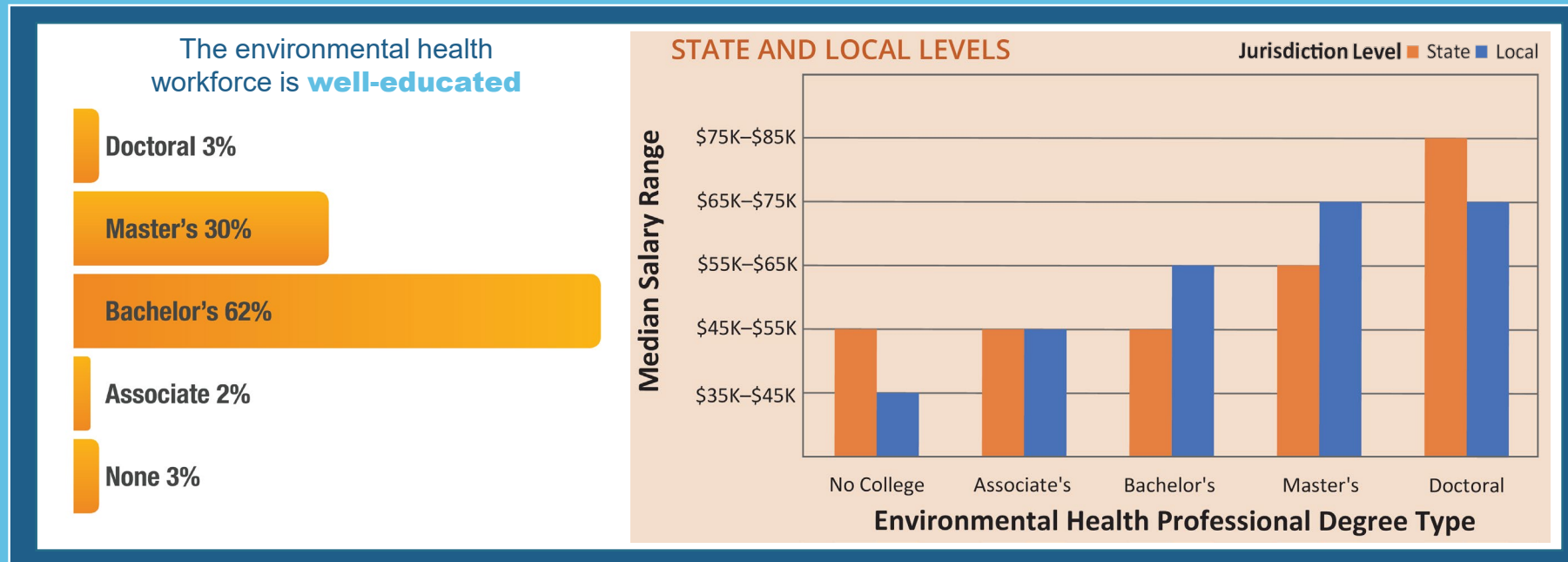
Food safety is the most common program area EH professionals work in, and many work in more than one.



1 out of 2 has the title of
Environmental Health Specialist

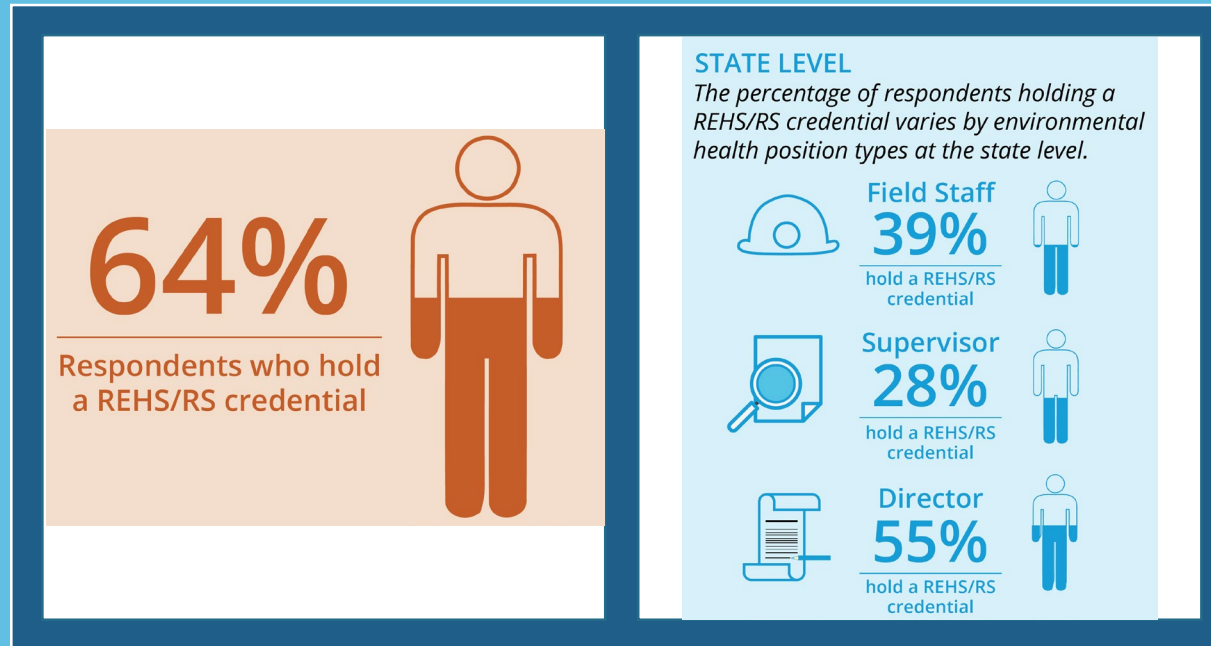
UNCOVER Findings

Environmental Health Education & Earnings



UNCOVER Findings

Environmental Health Credentials





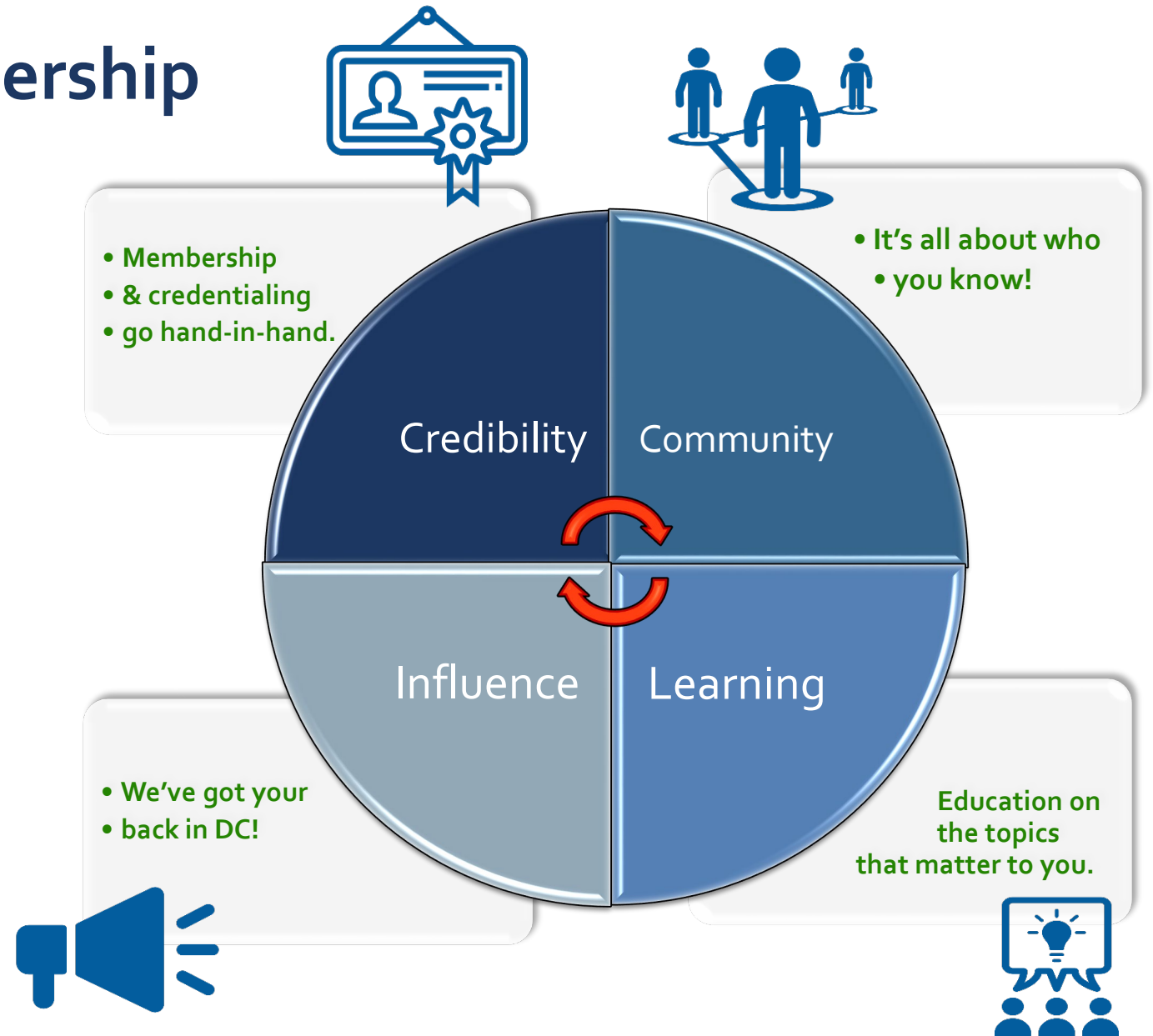
NEHA Membership

Jonna Ashley, Association Membership Manager

jashley@neha.org | (303) 756-9090 Ext. 336

The Value of NEHA Membership

NEHA membership provides environmental health professionals with connection, education, and advancement in their careers. Our nationally recognized credentials, extensive learning opportunities, and community of dedicated leaders position our members for greater professional success.





Credentialing and Food Safety Training

Sharon Unkart, PhD, Instructional Designer

sdunkart@neha.org | 303.756.9090 x 317

Largest Sector: Food Safety

- Cooperative agreements
 - FDA
 - CDC
- Face to face trainings
 - All over continental US
 - US Virgin Islands and Puerto Rico
 - Dubai
- Asynchronous online trainings
 - Professional Food Handler
 - Professional Food Manager
 - HACCP
 - REHS Review Course coming this fall

Food Safety – Full Vertical

- **Professional Food Handler**
 - ANSI-accredited certificate training program
- **Professional Food Manager**
 - Training for ANSI/CFP certification exam
- **Certified Professional – Food Safety (CPFS)**
 - Credential, Retail
- **Certified in Comprehensive Food Safety (CCFS)**
 - Credential, Manufacturing and Processing
- **Registered Environmental Health Specialist/Registered Sanitarian (REHS/RS)**
 - Credential, Regulatory
 - Licensed in 16 states
- **Food Safety Auditor**
 - Two credentials
 - Certified in Food Safety Supplier Audits (CFSSA, 1st and 2nd and food safety supply chain)
 - Registered Food Safety Auditor (RFSA, 3rd party audits)
- **Certified Foodborne Outbreak Investigator (CFOI)**
 - Credential, Regulatory or QA

Online HACCP Courses

- Basics for Processors and Manufacturers
- Basics for the Fresh and Fresh-Cut Produce Industry
- Managing Food Safety Hazards at the Retail Level
- HACCP for Food Handlers
- Basics for the Bottled Water Processors
- Globally Harmonized System (GHS) Training for Managers & Supervisors
- GHS Training for US Workers

Program and Partnership Development





Now Hiring!

- The Program and Partnership Development (PPD) Department is hiring a project coordinator!
- This is a great opportunity for a recent graduate or young professional in the Denver or DC office.
- If you're in the DC area, this would be a full-time work at home situation.
- The project areas are:
 - Water
 - Vector control
 - Informatics
- Visit here! <https://www.neha.org/node/60792>



Vector Control and IPM

Ayana Jones MPH, Project Coordinator | ajones@neha.org | (303) 756-9090 ext. 363

Natalie Brown, Project Coordinator | nbrown@neha.org | (202) 780-7186



- Tools and resources for program improvement activities
- 10 Essential Environmental Public Health Services

The Vector Control Tools & Resources (VeCToR) Toolkit 10 Essential Environmental Public Health Services



▼ Essential Service #8: Assure a Competent Environmental Health and Vector Control Workforce



Assure a Competent Environmental Health and Vector Control Workforce



Assure a competent environmental public health workforce

This essential service requires the assurance of a workforce that is adequately competent to meet the needs for the community's public health and vector services. Conducting assessments of the members of local, state and tribal health workforce is necessary to maintain standards, to improve the efficiency for professional licensure/credentialing and ability to incorporate the Essential Public Health Service into the systems.

Vector program activities that fit into Essential Service #8 include, but aren't limited to:

1. Providing access to education and training to workforce
2. Ensure workforce has appropriate certification

Education

Professional Development Opportunities This list includes career development pathways, credentials, professional organizations, and training opportunities

Vector Control for Environmental Health Professionals (VCEHP) Online course providing an understanding of the biology and control of vectors and public health pests

TRAIN Learning Network Contains 28 pest/vector control courses for environmental health professionals

Tools

Tools to Drive Quality Improvement of Vector Control Services Discusses the Public Health Foundation (PHF) and the Centers for Disease Control and Prevention's collaboration with five local health departments to identify interventions and implement quality improvement projects for their vector control services

Vector Control Tools and Resources for Environmental Health Professionals Information about vector control programs, classes for professionals, and a virtual vector control conference from the Environmental Health Services Branch of the CDC

Resources

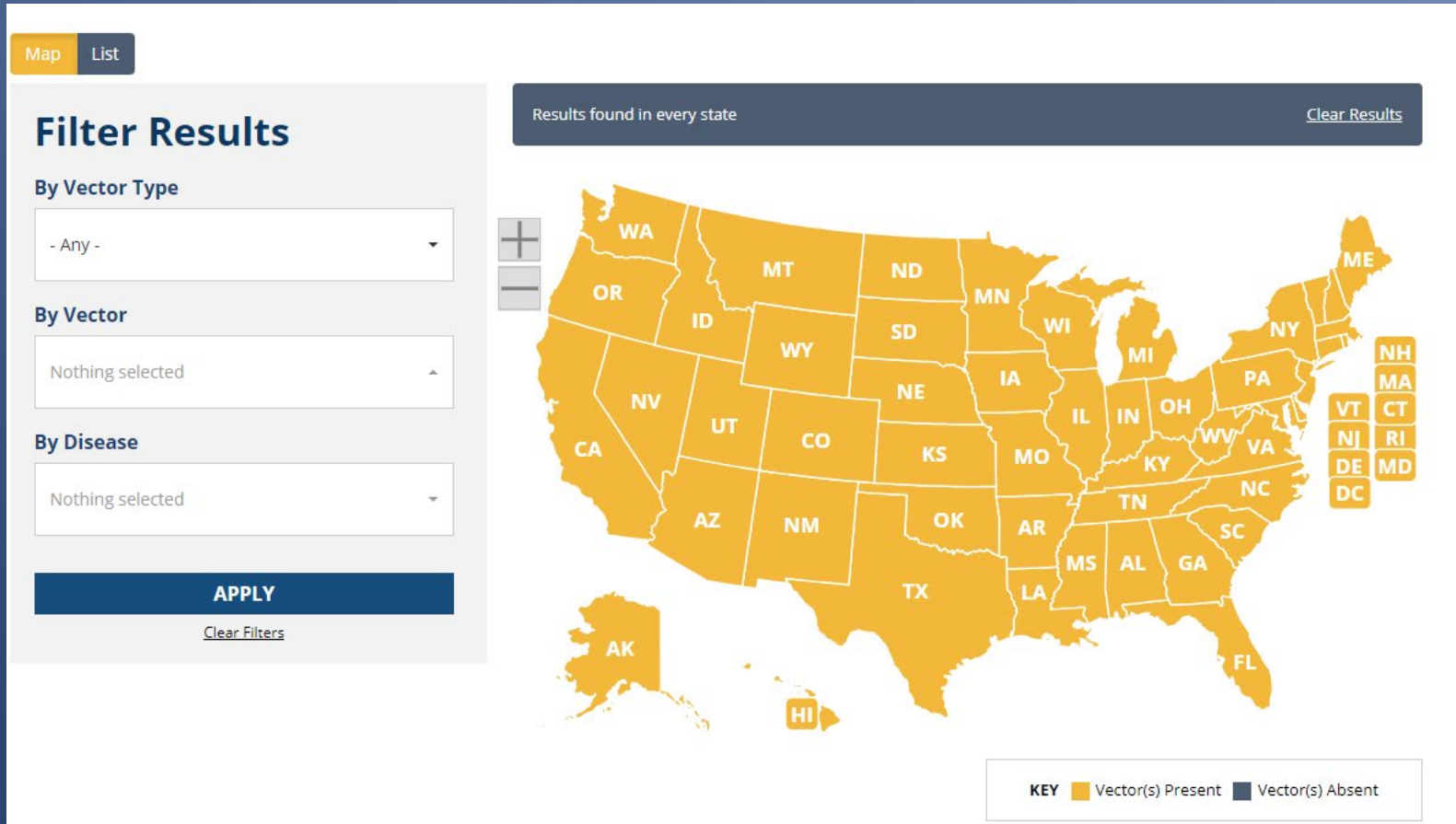
Student Intern Programs Can Enhance Mosquito Control Operations Article about the student intern program at the Anastasia Mosquito Control District (AMCD) in St Augustine, FL

Benefits and Accomplishments Gained from Outside Collaborations at Anastasia Mosquito Control District Article about the Anastasia Mosquito Control District's collaborations with private agencies, domestic and international institutes, and universities

The 3rd International Forum for Surveillance and Control of Mosquitoes and Mosquito-Borne Diseases Article about the 3rd International Forum for Surveillance and Control of Mosquitoes and Mosquito-borne Diseases held in Suzhou, Jiangsu, China

Vector-Borne Disease Control Directory CDC Division of Vector-Borne Diseases (DVBD) Control Directory

Vector Map



Vector Map

Results for

Clear Results

+

-

ME

NH

MA

CT

RI

MD

DE

VT

DC

CA

AK

HI

FL

Alaska

[Blattella germanica](#) - German Cockroach

[Cimex lectularius](#) - Bed Bugs

[Coquillettia perturbans](#) - Cattail Mosquito

[Ctenocephalides canis](#), [Ctenocephalides felis](#), [Xenopsylla cheopis](#), [Echidnophaga gallinacea](#) - Fleas (dog flea, cat flea, human flea, Oriental rat flea, and sticktight flea)

[Culex pipiens](#) - Common House Mosquito or Northern House Mosquito

[Culex tarsalis](#) - Western Encephalitis Mosquito

[Genus Anopheles](#) - Malaria Mosquitoes

[Mus musculus](#) - House Mouse

[Musca domestica](#) - Common Housefly

[Periplaneta Americana](#) - American Cockroach

[Rattus norvegicus](#) - Norway Rat, Brown Rat, Wharf Rat, House Rat, Gray Rat, or Sewer Rat

[Rhipicephalus sanguineus](#) - Brown Dog Tick

Overview

Surveillance

Control

Vector Type

Other

Vector Species Name

[Ctenocephalides canis](#), [Ctenocephalides felis](#), [Xenopsylla cheopis](#), [Echidnophaga gallinacea](#)

Vector Common Name

Fleas (dog flea, cat flea, human flea, Oriental rat flea, and sticktight flea)

Transmitted Diseases

[Cat Flea Rickettsiosis](#) [Cat Scratch Disease](#) [Plague](#)




Photo courtesy of CDC

Integrated Pest Management Virtual Conference



Pest-control through Environmentally
Sustainable Treatments Virtual Conference

Integrated Pest Management Solutions in EH

August 14-15, 2019

- [EPA-NEHA partnered project](#)
- Innovative forum for environmental public health professionals and vector control specialists to discuss emerging issues and solutions
- This year's conference date: August 14-15

Integrated Pest Management Guidance Document

School Integrated Pest Management (IPM) Mentorship Program Guidance Document

"IPM is not a miracle, it is a process."

School IPM Mentorship Program Summary

The project objective is to have IPM practices understandable and accessible for rural and underserved school districts in a way that helps build a culture of cooperation, partnership, and awareness of IPM. This will be done through partnership with local health departments and school districts that have successfully implemented IPM techniques, information sharing, educational opportunities, and community outreach. Studies have found that the use of IPM techniques reduces school absenteeism, use of pesticides, and pests in school buildings.

Importance of the School IPM Mentorship Program

Why the School IPM Mentorship Program is important and the role of NEHA and EPA. Protecting children's health is a top priority for EPA and NEHA. Pests pose hazards to the health of students, faculty, and staff. IPM uses a smart, sensible, and sustainable approach to managing pests. It helps reduce exposure to pests and pesticides, while saving money and energy, and protecting environmental health.

- NEHA is a national organization that supports thousands of members who are committed to ensuring that the air we breathe, the food we eat, the water we drink and play in, and the homes and buildings we live and work in are all safe for people to enjoy. Since 1937 NEHA has been at the crossroads wherever human health and the environment intersect. Our members are in the public and private sectors as well as in universities and uniformed services. NEHA's mission, "to advance



Programs and Resources from the National Environmental Health Association

Private Water Network

Reem Tariq, MSEH
Project Coordinator, NEHA

June 19, 2019

Overview

- What is PWN?
- Background
- Mission
- Goal
- Partners
- Community platform
- Member Engagement



What is PWN?

The Private Water Network is a virtual community for or a network of public health professionals from state, local, tribal, and territorial governmental agencies who support private water programs to connect with their peers, to share experiences, insights, and resources, and to gain access to timely and relevant guidance for emerging issues.



Background

- Over 15 million U.S. households rely on private water systems for drinking water.
- Owners of private wells are responsible for ensuring that their water is safe from contaminants.
- Fifty six percent of local health departments regulate, inspect, or license private drinking water in their community.

Mission

The mission of the PWN is to build a sustainable community for people working to protect the public's health from contaminants in private water sources.



Goal

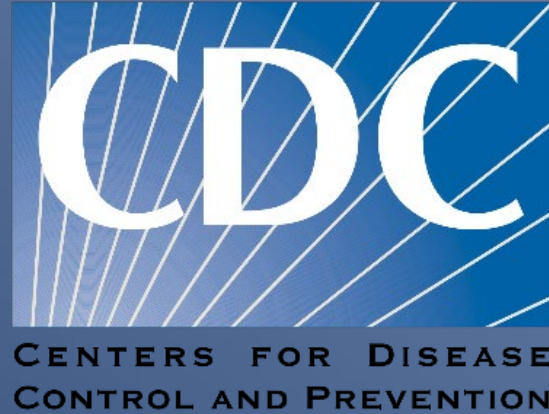
To build a sustainable community for those working to support private water programs

- to connect with their peers,
- to share experiences, insights, and resources, and
- to gain access to timely and relevant guidance for existing and emerging issues
- to build capacity to do the work more effectively and efficiently

in order to protect the public's health from contaminants in private water sources.

Partners

- CDC



- National Networks of Public Health Institute (NNPHI)



Membership

MEMBERSHIP TYPE	WHAT VALUE THEY PROVIDE?	WHAT VALUE DO THEY DERIVE?
State, tribal, local, and territorial governmental public health agencies	<ul style="list-style-type: none"> • Expertise • Resources • Ideas 	<ul style="list-style-type: none"> • Expertise • Shared resources • Connection with peers • Ideas
Other state agencies (environmental health, wells, permitting, natural resources, agriculture, health, ecology, land, water conservations, transportation, geology, building codes, permits, flood plains, emergency management)	<ul style="list-style-type: none"> • Access to other experts that deal with wells and have access to data an information • Subject matter expertise • Insights into new legislation and laws 	<ul style="list-style-type: none"> • They know who to refer individuals for health – so their primary contact would be their state/local health agencies • Question: Would members from this group care about what's going on in the other states?
Federal agencies (EPA, ATSDR, FEMA, CDC, UGUS, ASPR, Army Corps of Engineers)	<ul style="list-style-type: none"> • Authority • Credibility • Funding 	<ul style="list-style-type: none"> • See what is emerging in other states – is there a common theme going • Get an on-the-ground perspective
National organizations (NEHA, ASTHO, NGWA, NACCHO, NSF, WQA)	<ul style="list-style-type: none"> • Objective, independent technical expertise • Funding 	<ul style="list-style-type: none"> • See what is emerging in other states – is there a common theme going • Get an on-the-ground perspective
Certified laboratories	<ul style="list-style-type: none"> • Answer questions about what they do or do not offer 	<ul style="list-style-type: none"> • To learn how STLT public health agencies are interacting with labs and the types of services they need. To learn how to coordinate around consistent public health messaging related to well water contaminants in their jurisdictions.
Academic/Extension Partners	<ul style="list-style-type: none"> • Access to research and evidence • connections to broader networks 	<ul style="list-style-type: none"> • Research opportunities • A place/opportunity for interns

Member Engagement and Activities

Activity	Purpose
Reference Library	Provide access to replicable tools and resources.
Webinar + Office Hours	Provide opportunities to learn about topical issues and pose questions to subject matter experts.
Weekly newsletter	Inform members of events, emerging issues, and resources.
Discussion Forum	Provide a mechanism for sharing with and querying peers.
Meet-Ups	Provide face-to-face networking and fellowship.

Current and Future Work

- Building the platform using Higher Logic Community Platform.
- Network to be launched in early August.



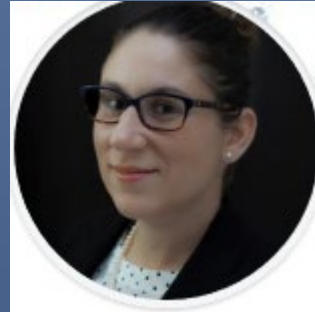
Contact Information



Reem Tariq
Project Coordinator
rtariq@neha.org



Christine Ortiz Gumina, MPH
Project Coordinator
Programs and Partnership Development



Programs:
Association of Maternal and Child Health Programs (AMCHP)
National Environmental Public Health Internship Program (NEPHIP)
Preparedness Workgroup Committee

AMCHP CoIIN Lead and Child and Maternal Health (AMCHP)



The role of NEHA in the partnership with AMCHP is to

- Assist state teams in creating an environmental health policy tactic to reduce children's exposure to lead through training and guidance documents.
- Establish support resources so states may be able to develop policy and legislation around lead exposure and prevention
- Identify and promote access to environmental health professionals around the country who are working within their communities on lead exposure
- Assist state teams in identifying non-governmental funding opportunities outside of federal and state to support their work

NEHA AMCHP CoIIN Documents





The National Environmental Public Health Internship Program (NEPHIP)

- NEHA administers the National Environmental Public Health Internship Program (NEPHIP) is supported by cooperative agreement CDC-RFA-OT18-1802.
- The purpose of NEPHIP is to encourage environmental health students to consider careers at local, state, or tribal environmental public health departments following graduation. Through this internship program, students will be exposed to the exciting career opportunities, benefits, and challenges of working with environmental public health agencies throughout the U.S.

NEPHIP CONT.





Preparedness Workgroup Committee

Application Information

- June 7, 2019 - July 31, 2019
- Link: <https://neha.org/node/60772>

Who Are We Looking For?

- Environmental Health professionals with strong backgrounds in preparedness, biodefense, and emergency management.
- Selectees will form the NEHA Preparedness Workgroup.
- Must be a NEHA member in good standing.



Workgroup Details

- Local, State, Tribal, Federal and Academic environmental health professionals, along with industry environmental health professionals. The workgroup will be a think tank designed to help program understand what is happening on the ground in their areas of expertise!

Contact Information

- Christine Ortiz Gumina: cortizguminac@neha.org



Climate & Health

Natalie Brown, Project Coordinator | nbrown@neha.org | (202) 780-7186

Projects

Mini-Grants

- Small grants awarded to Minnesota Department of Health and Portland, OR tri-county team
- Working on demonstration projects for climate + health
- A joint webinar will be conducted this fall- stay tuned

Clean energy declaration

- Climate Leadership Award at the ecoAmerica Climate Leadership Summit

Resources

Climate & Health Paper

- Emergency Preparedness and Response to Climate Change- Coming Soon!

Policy Statements

- Climate Change Policy Statement
- Renewable Energy Policy Statement- Coming Soon!

Involvement Opportunities

- The Climate & Health Committee Mission: To be a resource in addressing the environmental and public health impacts from climate change. The Climate & Health Committee Goals:
 1. Ensure NEHA members have basic climate science information
 2. Develop, share, review, and disseminate resources on climate change policies, programs, and best practices to support NEHA, EH professionals, and the public
 3. Identify and recommend the needs of the profession, training gaps, challenges, and emerging issues
 4. Guide and provide input on NEHA's climate change programs and projects

Involvement Opportunities

- The Climate & Health Committee will be opening it's call for member applications this fall!
- Representatives from tribes are uniquely positioned to provide insight on climate and health and are strongly encouraged to apply
- Applicants must be members of NEHA

Involvement Opportunities



**Climate *Ambassador* Training
Workshop**
July 9, 2019

**Climate + Health
*Day of Sessions***
July 10, 2019



Questions?



Thank You!

National Indian Health Board



Questions and Discussion

TO ENTER A QUESTION, PLEASE USE THE CHAT
BOX, NOT THE Q&A BOX

PLEASE SEND TO ALL PANELISTS

National Indian Health Board



Thank you!

PLEASE BE SURE TO COMPLETE SURVEY
(TO BE SENT VIA EMAIL)